

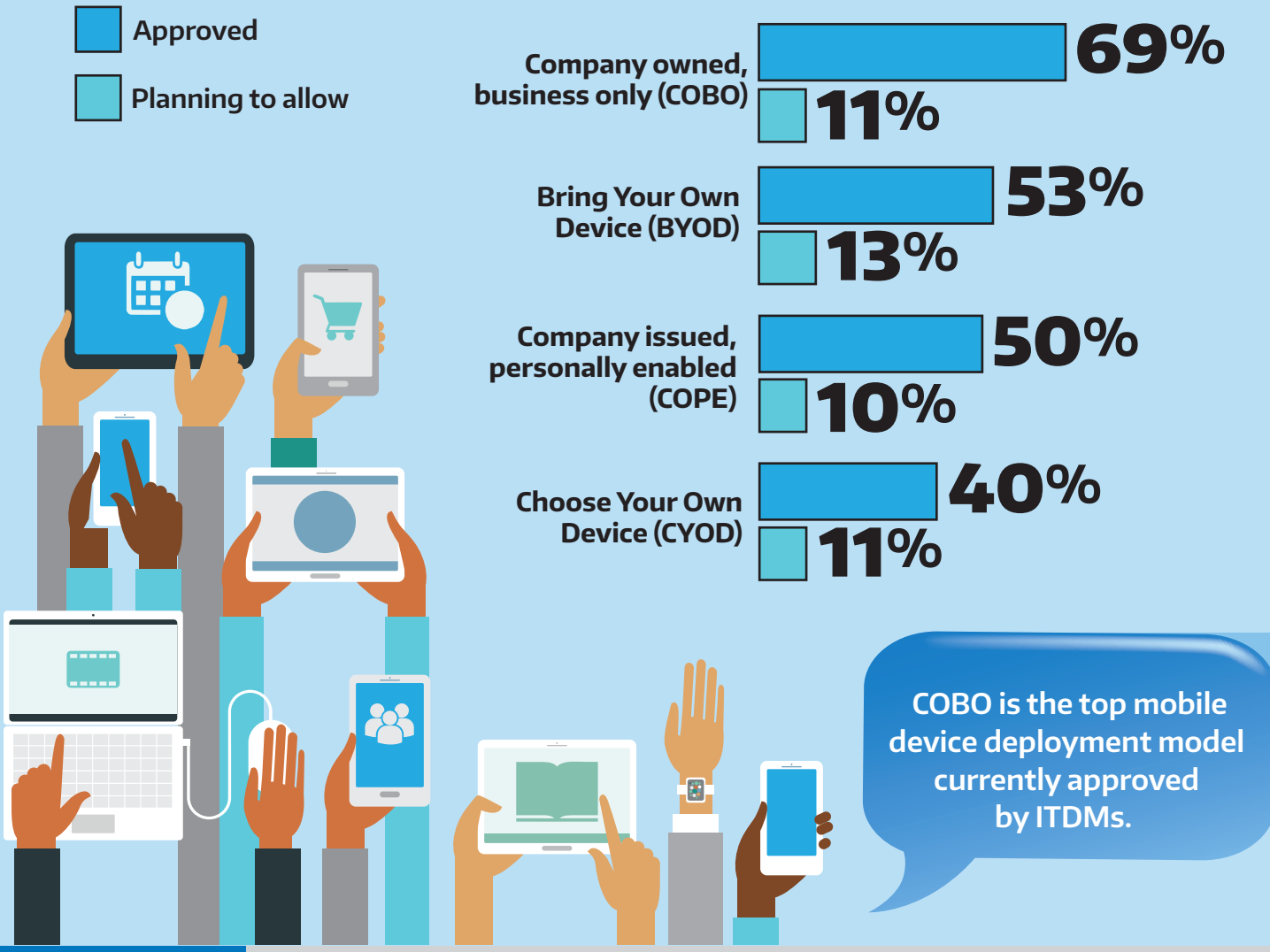
# The Pulse of IT

## What our latest stats reveal around **Mobility**



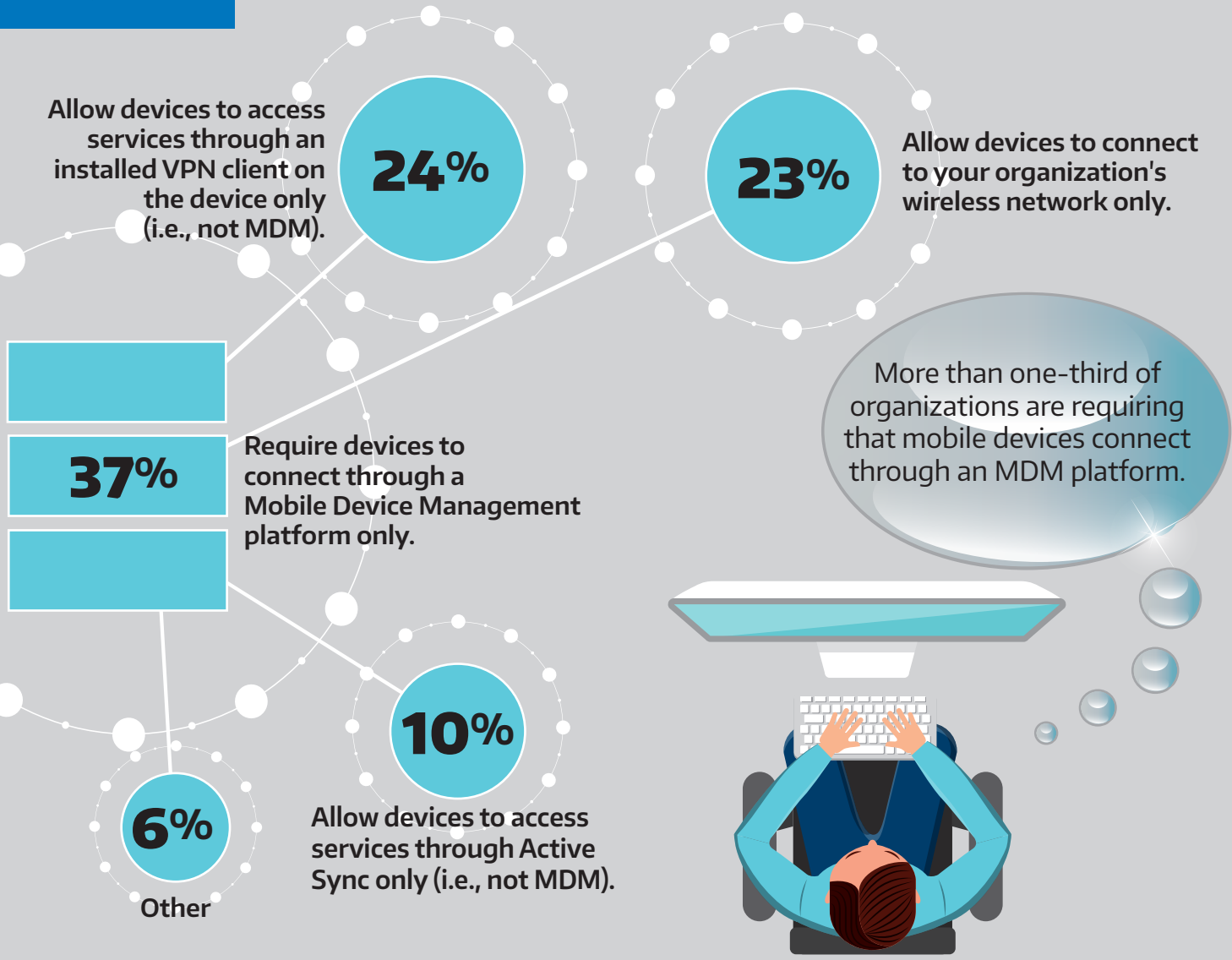
### Q.1

Many institutions and organizations are planning to implement mobile devices. What type of mobile devices are approved for your expected user base?



### Q.2

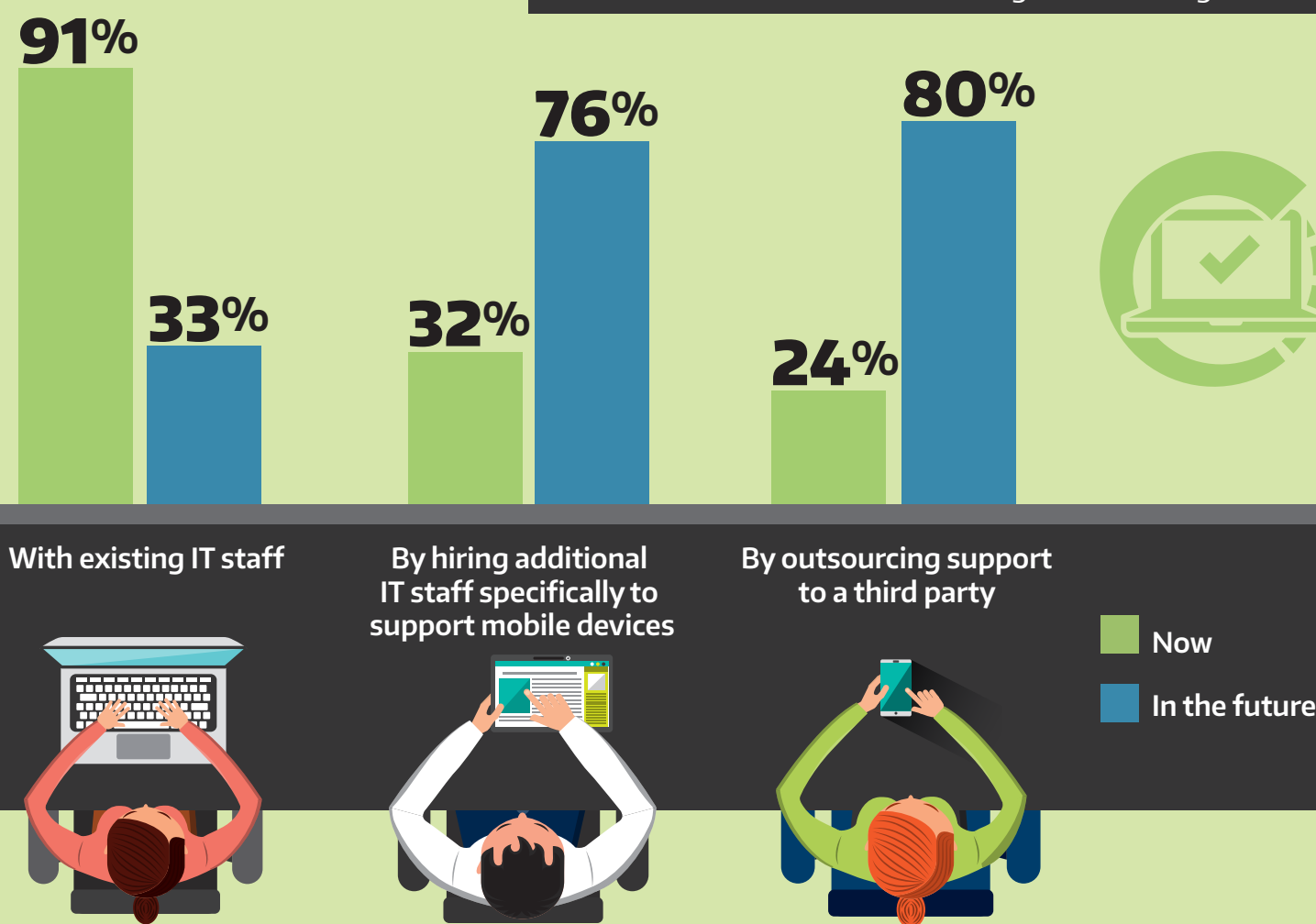
How are you planning to connect mobile devices to approved services in your organization?



### Q.3

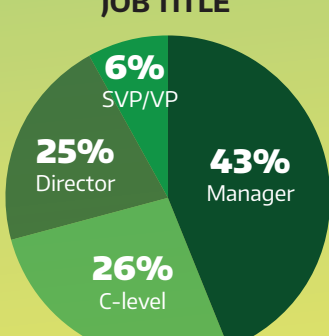
How do you plan to support the mobile devices in your organization over their lifecycle?

There has been a dramatic shift away from outsourcing mobile device support to working with existing IT staff.

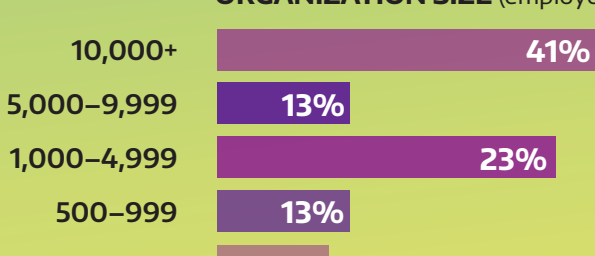


## Respondent Profile

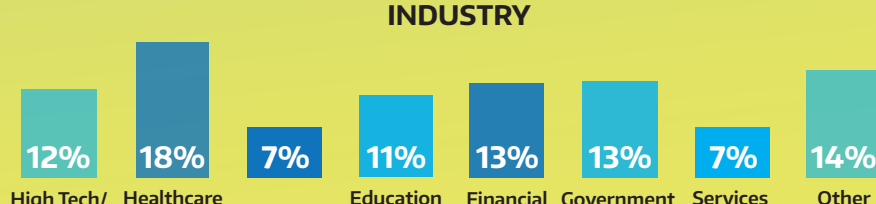
#### JOB TITLE



#### ORGANIZATION SIZE (employees)



#### INDUSTRY



» Whatever the latest trends in IT, Connection is ready to solve your toughest challenges. Visit [www.connection.com/MobilityPractice](http://www.connection.com/MobilityPractice) for the full story.

IDG August 9, 2016 TechPulse poll. Base = 106 IT decision makers.

1.800.800.0014

**Connection**  
we solve IT™

©2016 PC Connection, Inc. All rights reserved. Connection®, PC Connection®, GovConnection®, MoreDirect®, Softmart®, and we solve IT™ are trademarks of PC Connection, Inc. All other copyrights and trademarks remain the property of their respective owners. C405293-0616