

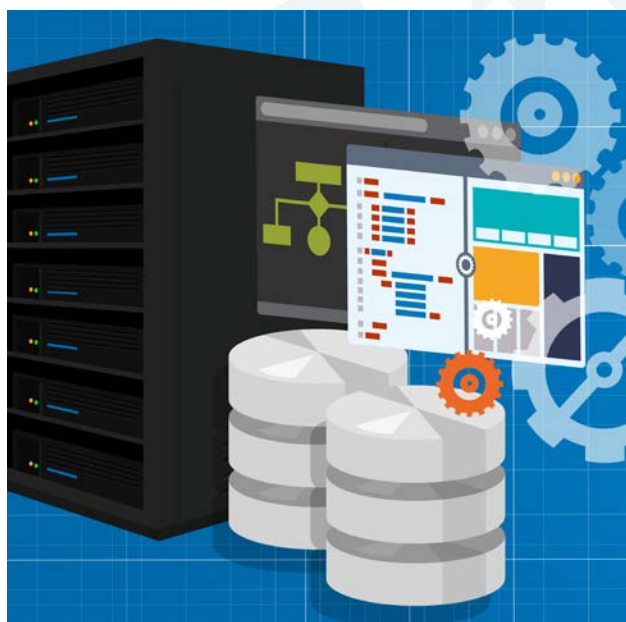
# Packaged Services to Suit Your Needs

## Are You Ready for the Next Big Leap?

In this age of ever-evolving technology, today's data centers can go from leading edge to outdated in a very short time. Maintaining pace can take everything you have. To help keep your infrastructure modern, Connection offers a set of simple, easy-to-consume service options to help you reach your goals.

These professional IT services will help you maintain your infrastructure and support your unique needs throughout the technology lifecycle. With the proper service, you can effectively manage your next migration or infrastructure upgrade and achieve significant savings and new efficiencies along the way.

» For more information on these and other comprehensive Connection services, contact your Account Manager today.



### Exchange 2007 to 2013 On-Premises Migration

**IMPLEMENTATION:** 1-2 Weeks

**ACTIVITIES:**

- Assess Active Directory and DNS health
- Perform an assessment of the Active Directory environment and provide remedial guidance
- Review UPN requirements and replace as needed
- Provision and configure Exchange Online tenancy
- Set up Directory Synchronization
- Configure and perform mail migration using MigrationWiz
- Configure and perform cutover using DeploymentPro
- Transition mailboxes, shared account, resource mailboxes, mail flow, and mail access from Exchange on-premises to Exchange online
- Perform migration of user mailboxes per organization (maximum of 250)

**NOTES:** Up to 2,000 users, limited to on-premises Exchange infrastructure to a Microsoft hosted Exchange solution, coexistence or pilot migration will not be possible in a MigrationWiz or DeploymentPro scenario

### Exchange 2007 to Office 365 (Exchange Online) On-Premises to Cloud Migration

**IMPLEMENTATION:** 1-2 Weeks

**ACTIVITIES:**

- Assess AD and DNS health as it relates to Exchange Online (Office 365) requirements
- Perform an assessment of the Active Directory environment and provide remedial guidance
- Review UPN requirements and update as needed
- Provision and configure Office 365 tenancy
- Set up Directory Synchronization (AAD Connect) Server and enable Active Directory synchronization in Office 365
- Install Exchange Hybrid prerequisites
- Set up Exchange Server as a Hybrid Server
- Manage and enhance the hybrid configuration
- Transition mailboxes, shared account, resource mailboxes, mail flow, and mail access from Exchange on-premises to Exchange online
- Perform migration of up to 20 mailboxes

**NOTES:** Up to 2,000 users, limited to on-premises Exchange infrastructure to a Microsoft hosted Exchange solution, customer responsible for remaining mailbox migration

### Exchange 2007 to Office 365 (Exchange Online) On-Premises to Hybrid Cloud Migration

**IMPLEMENTATION:** 1-2 Weeks

**ACTIVITIES:**

- Assess AD and DNS health as it relates to Exchange Online (Office 365) requirements
- Perform an assessment of the Active Directory environment and provide remedial guidance
- Review UPN requirements and update as needed
- Provision and configure Office 365 tenancy
- Set up Directory Synchronization (AAD Connect) Server and enable Active Directory synchronization in Office 365
- Install Exchange Hybrid prerequisites
- Set up Exchange Server as a Hybrid Server
- Manage and enhance the hybrid configuration
- Transition mailboxes, shared account, resource mailboxes, mail flow, and mail access from Exchange on-premises to Exchange online
- Perform migration of up to 20 mailboxes

**NOTES:** Up to 2,000 users, limited to on-premises Exchange infrastructure to a hybrid on-premises Microsoft hosted Exchange solution, customer responsible for remaining mailbox migration

Continued >



## SharePoint Online Jumpstart

**IMPLEMENTATION:** 1-2 Weeks

**ACTIVITIES:**

- Verify status of client Office 365 tenant default site collections
- Design required SharePoint Site Collection Architecture to facilitate document collaboration in the organization
- Develop Intranet and at least one department site
- Provide guidance on use of SharePoint Online
- Develop and present documentation "as built" document

**NOTES:** Limited to installing SharePoint online and developing a single Intranet and a department site collection

## Skype for Business Jumpstart (No Voice)

**IMPLEMENTATION:** 1-2 Weeks

**ACTIVITIES:**

- Add Skype for Business Online specific DNS records
- Configure firewall as needed
- Test settings to validate communication for Office 365 requirements with Skype for Business Online
- Assign Skype for Business Online licenses
- Provide guidance to prepare workstations with requirements for Skype for Business client
- Download and install Skype for Business client on up to 100 workstations
- Test application to validate IM, presence, and online meetings function properly

**NOTES:** Limited to installing Skype for Business for IM and presence on up to 100 workstations

## Citrix NetScaler Load Balancer

**IMPLEMENTATION:** 1-2 Weeks

**ACTIVITIES:**

- Download and import NetScaler virtual appliance
- Configure Management IP, Subnet Mask, and Gateway
- Ensure NetScaler Web Portal works after the initial configuration and reboot
- Configure Virtual IP (VIP), LDAP, and SNIP
- Apply the license to the appliance
- Enable SSL, NS Gateway, and Load Balancing features under Settings
- If required, create the NetScaler key and certificate signing request from the appliance which then can be used to request a server certificate from public Certificate Authority (CA) vendors like GoDaddy or VeriSign
- Install the SSL certificate on the appliance along with root and intermediate certificates
- Attach the installed SSL certificate to the Gateway virtual server and link the root and intermediate certificates
- Configure Gateway settings on the StoreFront server to provide secure access via NetScaler
- Test the connectivity via NetScaler

**NOTES:** One virtual device, limited to installing a Citrix NetScaler virtual load balancer in the customer environment

**» A modern data center is just a phone call away. Let our team of experts ensure your infrastructure supports today's technology.**

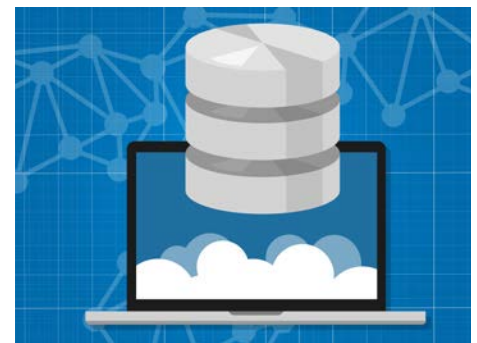
## Active Directory Upgrade

**IMPLEMENTATION:** 1-2 Weeks

**ACTIVITIES:**

- Perform Active Directory (AD) assessment
- Prepare the current Active Directory infrastructure for upgrade
- Install Windows Server 2012 R2
- Install and configure new domain controllers (DC) in forest
- Migrate all roles to new DCs
- Demote current DCs
- Raise domain and forest modes in each domain and forest to desired level

**NOTES:** Limited to upgrading and transitioning services from six DCs



## Active Directory Assessment

**IMPLEMENTATION:** 1-2 Weeks

**ACTIVITIES:** Assessment, analysis, and documentation of the following areas against Microsoft published guidelines:

- Active Directory, DNS, and DHCP environment
- Active Directory replication
- Replication site topology
- Status and convergence
- Forest and domain information
- Sites information
- Subnet information

**NOTES:** We will utilize Microsoft Baseline Analyzers along with various command line utilities to compile and deliver an Assessment report with recommendations for remediation as required

Contact an Account Manager for more information.

Business Solutions

1.800.800.0014

Enterprise Solutions

1.800.369.1047

Public Sector Solutions

1.800.800.0019

[www.connection.com/Services](http://www.connection.com/Services)

**Connection**<sup>™</sup>  
we solve IT<sup>™</sup>