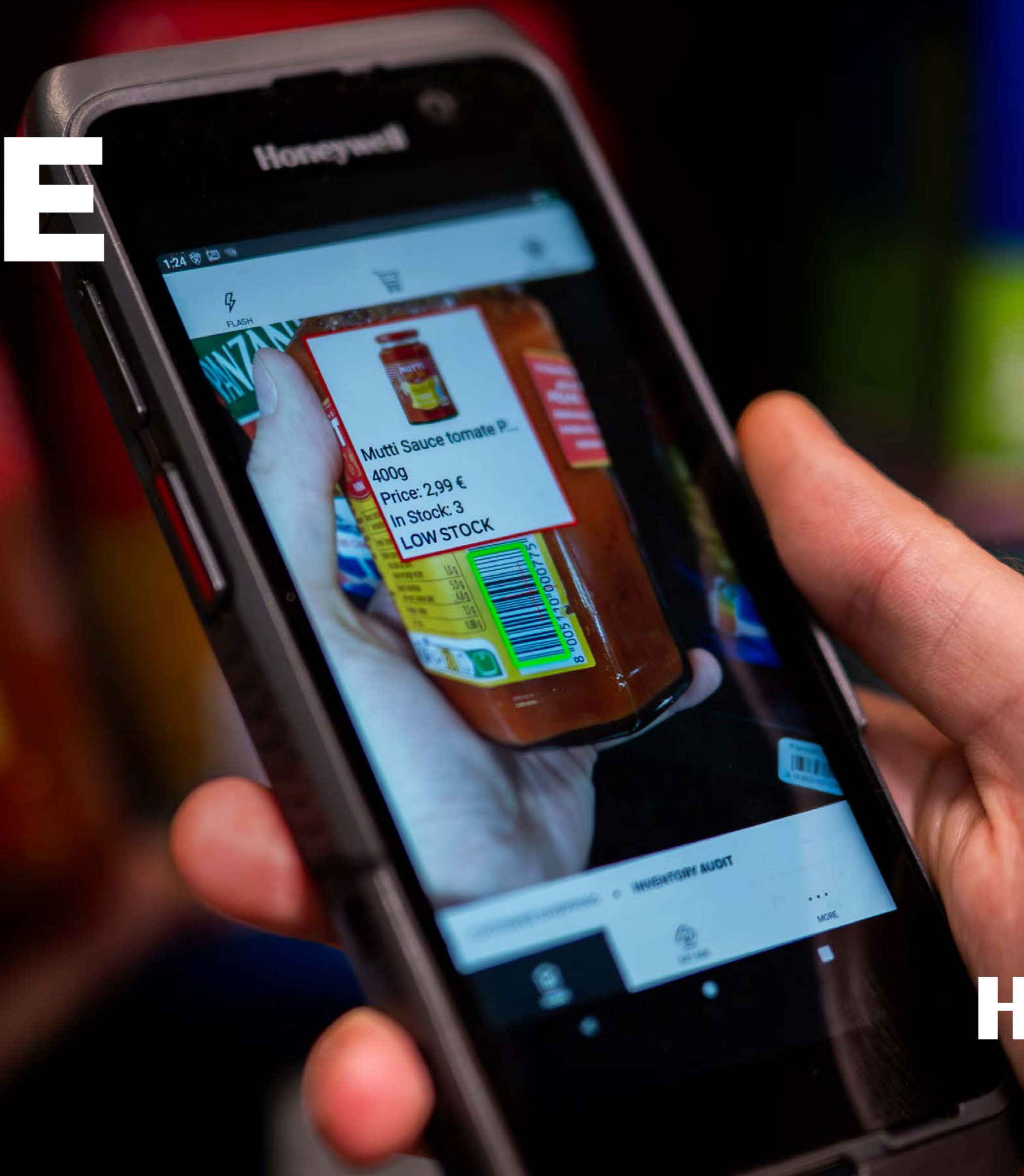


# UNLEASH DYNAMIC COMMERCE



START THE JOURNEY

Honeywell



# WHAT IS DYNAMIC COMMERCE?

In retail technology, dynamic commerce means creating a real-time, **adaptive shopping experience powered by data, automation, and AI**. Instead of static catalogues and fixed prices, everything, from product availability to pricing, promotions, and customer engagement, **can change instantly based on conditions**.

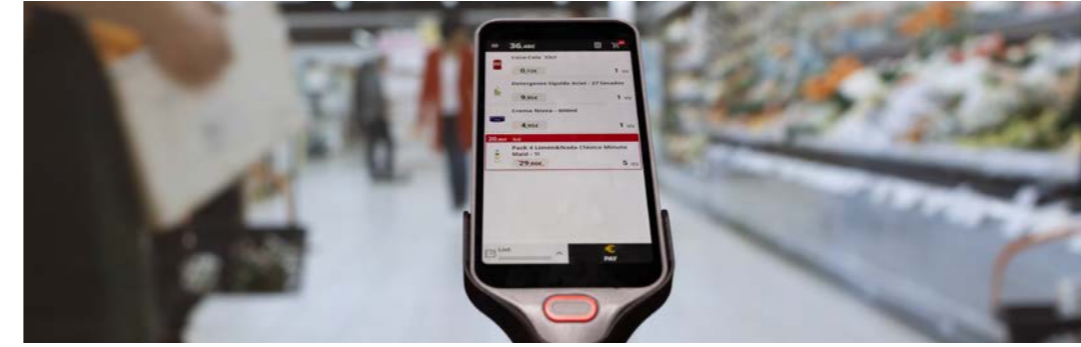
Retail Needs:

- **Real-Time Responsiveness:** Provide tools for quick reactions to customer needs and market changes.
- **End-to-End Visibility:** Integrate all channels for a complete operational overview.
- **Customer-Centric Innovation:** Enhance experiences with personalised and seamless technologies.
- **Operational Efficiency:** Use automation to cut costs and focus on customers.
- **Future-Proof Solutions:** Adopt adaptable platforms that grow with your business.





# PRIORITIES AND CHALLENGES FACING RETAILERS



## SHOPPER EXPERIENCE

Shoppers expect seamless, personalized, and eco-friendly experiences across every channel; exceeding these demands drives loyalty, while falling short risks lost opportunities.



## WORKFORCE OPERATIONS

Retailers must empower agile teams with AI-driven tools, real-time analytics, and personalized training to transform workforce complexity into a strategic advantage and sustained growth.



## BUSINESS TRANSFORMATION

Businesses must integrate AI, unify data, and upskill staff to enable agile, sustainable operations and deliver innovative, seamless customer experiences.



## COST OPTIMIZATION

Retailers achieve cost optimization by automating decisions, leveraging high-quality data, and managing resources proactively to reduce waste, losses, and inefficiencies while boosting margins.



# HIGH-QUALITY DATA FOR DYNAMIC GROWTH

Honeywell helps retailers quickly adapt and grow by using real-time data and AI for dynamic pricing, efficient inventory, and seamless customer experiences; all powered by reliable data and a focus on sustainability and measurable results.



Click on the icons to explore



# RETAIL BEST SELLERS

Honeywell is focused on delivering innovative retail solutions for our customers that drive end-to-end productivity. Our solutions help retailers manage large amounts of data while empowering associates to have instant access to organizational knowledge, streamlining and improving customer interactions. Our portfolio end-to-end solutions including handheld mobile computers, barcode scanners, Guided-work solutions, printing platforms and software to provide seamless retail operations.



# MOBILE SOLUTIONS FOR MOBILE WORKERS

Honeywell's mobility devices combine the advantages of consumer devices and high-end industrial mobile computers and tablets into a single rugged package. Our mobile computers are built to withstand the most challenging retail environments. They are sleek and lightweight devices that have power management advantages, ensuring that batteries will last up to two full shifts for those running on Mobility Edge™.

For mobile workers on the retail salesfloor, battery life is crucial because every second lost to swapping devices that need recharging represents lost productivity and impedes customer satisfaction.

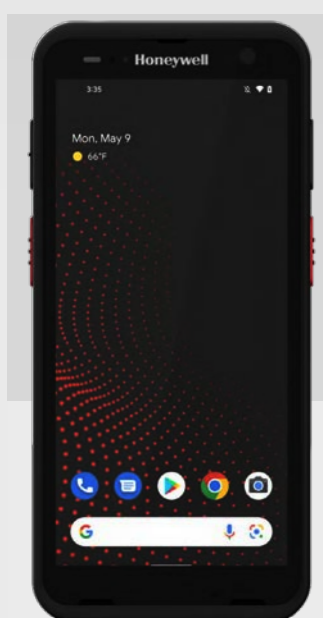
**ERROR-PROOF YOUR RETAIL ENTERPRISE WITH THE INDUSTRY'S MOST ADVANCED ULTRA-RUGGED MOBILE DEVICES READY FOR THE TOUGHEST ENVIRONMENTS.**





# MOBILITY

## Handhelds



### MOBILITY EDGE™ CT70

The CT70 is an ultra-rugged, all-in-one mobile computer with Mobility Edge, seamless Android updates, 5G, Wi-Fi 7, long battery life, and integrated features for efficient logistics and retail operations.



### MOBILITY EDGE™ CT37

The CT37 mobile computer combines a familiar phone experience with enterprise durability, rapid deployment, advanced scanning, strong processing, and 5G/Wi-Fi 6E, making it ideal for frontline retail associates.



### MOBILITY EDGE™ CT32

The CT32 is a rugged 5G mobile computer for retail, logistics, and warehouses, featuring long-range barcode scanning, multiple Android version support, and dust and water resistance for secure, ergonomic use during long shifts.



### MOBILITY EDGE™ CK67

CK67 Mobile Computers, built on Mobility Edge, are ultra-rugged devices with 5G, Wi-Fi 6E, Qualcomm QCM4490 processor, FlexRange XLR scanning, and Android 18, designed for high-performance warehouse and distribution center productivity.



### MOBILITY EDGE™ CK62

The CK62 is a lightweight, rugged mobile computer for warehouses, with 5G, Wi-Fi 6E, FlexRange™ XLR scanning, a 7,000-mAh battery, and Android 14–18 support for reliable, always-connected performance in tough environments.



**POWER UP WITH:**

Operational Intelligence, SwiftDecoder, SmartTalk, Smartpay



**POWER UP WITH:**

8675i, Guided Work, RFID Operational Intelligence, Swfitdecoder, SmartPay



**POWER UP WITH:**

SwiftDecoder, SmartTalk



**POWER UP WITH:**

8675i, Guided Work, Operational Intelligence, SRX3 Headset



**POWER UP WITH:**

Operational Intelligence



# MOBILITY

## Handhelds



### CS32 PERSONAL SHOPPER

The Honeywell CS32 Personal Shopper transforms retail by letting customers scan and pay as they shop, streamlining checkout. Its ergonomic, robust design and full-HD display ensure reliable performance, while advanced scanning, NFC payments, and loyalty integration boost convenience and efficiency for both shoppers and retailers.



**POWER UP WITH:**

Operational Intelligence, Smartpay

## Tablets



### MOBILITY EDGE EDA10A

The Honeywell EDA10A tablet is a rugged, lightweight device with a 10-inch high-resolution screen and fast 5G and Wi-Fi 6 connectivity for reliable mobile data access, ideal for salesfloor, customer service, and checkout use



**POWER UP WITH:**

8675i, Guided Work, Operational Intelligence, SRX3 Headset



### MOBILITY EDGE RT10

The Honeywell RT10A rugged tablet is designed for rapid user adoption, minimized TCO and optimized device management. Whether you're a supervisor or a shop floor employee, a manager or a maintenance worker, the RT10A is ready to fit into your daily workflow.



**POWER UP WITH:**

The Granit Ultra™ Scanners

## Wearable



### MOBILITY EDGE CW45

Setting a new standard in hands-free productivity and performance for the frontline worker. Built on the Mobility Edge™ for longevity and with FlexRange scanning distances, CW45 is a powerhouse wearable computer helping empower workers to improve transaction speed and throughput.



**POWER UP WITH:**

8675i, Guided Work, Operational Intelligence, SRX3 Headset



# WEARABLE TECHNOLOGY

In mobile workflows, less wasted movement produces greater efficiency. This is especially true for tasks like picking workflows, large package handling, sortation, truck loading and other common workflows in warehouse and back-to-the-store, as well as order picking, task management in-store. With Honeywell's variety of wearable solutions, there's no need for your mobile workers to find, pick up, and set down a handheld scanner. And with greater efficiency comes greater productivity, helping your business keep pace with demand, while reducing labor costs and improving customer service.



# | WEARABLE TECHNOLOGY

## Wearable Computer

## Wearable Scanners



### CW45

Setting a new standard in hands-free productivity and performance for the frontline worker. Built on the Mobility Edge platform for longevity and with FlexRange scanning distances, CW45 is a powerhouse wearable computer helping empower workers to improve transaction speed and throughput.

### 8675i

Fast and accurate tracking of goods is critical to efficient operation for order fulfillment and inventory management. With FlexRange scanning distances, 8675i enables wearable scanning in applications that would have previously required a handheld device.

### 8680i

The 8680i Wearable Mini Mobile Computer is a cost-efficient solution driving enhanced productivity through a direct wireless connection to the host and interactive display.

### 8690i

The Honeywell 8690i wearable device is a compact, high-performance, hands-free mini mobile computer for your business that will help you improve workflow efficiency and reduce costs. Industry-standard EPC Global Class 1 Gen 2, RFID reader ensures that the 8690i can read all common supply chain RFID tags.



**POWER UP WITH:**

8675i, Guided Work, Operational Intelligence, SRX3 Headset



**POWER UP WITH:**

CT37, CT70, CW45, Guided Work, Operational Intelligence



**POWER UP WITH:**

CT37, CT70, CW45, Guided Work, Operational Intelligence



**POWER UP WITH:**

CT37, CT70, CW45, Guided Work, Operational Intelligence



# | WEARABLE TECHNOLOGY

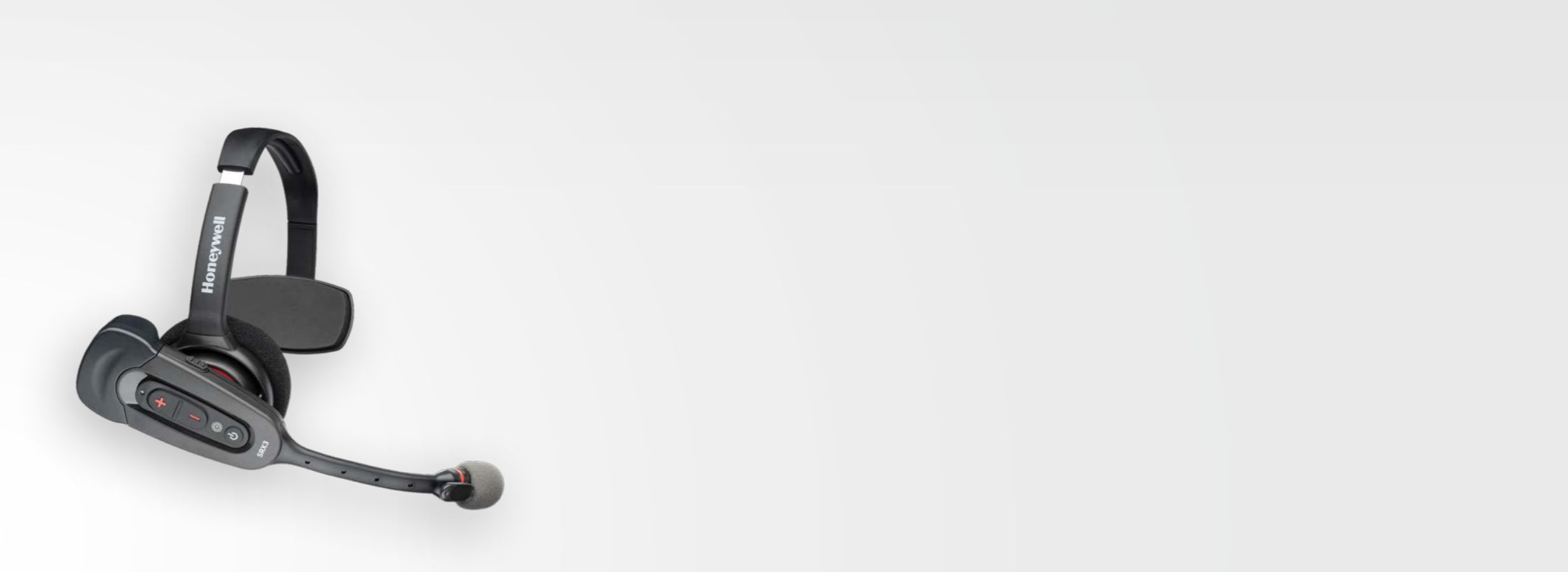
## Voice Automated Solutions



### GUIDED WORK

Honeywell's Guided Work solutions flexible platform provides options from general purpose, purpose built or a hybrid of technologies. Voice software performs on Android, iOS and Honeywell foundational Talkman series.

## Voice Headsets



### SRX3 WIRELESS HEADSET

The SRX3 Wireless Headset delivers advanced Bluetooth® technology for improved mobile workforce ergonomics, productivity, and voice-directed workflow efficiency. Its superior speech recognition and flexible design suit various industrial and in-store environments, including picking, distribution, and fulfillment.



**POWER UP WITH:**

CT70, CT37, CW45, Operational Intelligence, RFID



# FLEXIBLE RETAIL SCANNING

Reliable scanning systems are a necessity for today's retail enterprise and their mobile workforce. Throughout Honeywell's years of innovation, we've developed a variety of scanners to meet your every retail need.

## **ULTRA-RELIABLE INDUSTRIAL AND WEARABLE SCANNERS.**

Even in challenging working environments, you can trust our handheld, industrial-grade barcode scanners to provide superior durability and reliability. Our scanners are encased in waterproof and dustproof housings and rubberized to reduce damage from falls or tumbles, providing a long life cycle and low cost of ownership. Our scanners are perfect for fastpaced, high-volume barcode scanning.





# | SCANNERS

## Industrial Scanners



### GRANIT™ ULTRA SCANNER

The Granit Ultra scanner offers exceptional speed, durability, and ease of use for warehouses and distribution centers. With advanced AI and processing, it increases scanning speed by 45% over the Granit XP, boosting productivity for complex or high-volume orders and hard-to-scan items.



**POWER UP WITH:**

CT70, CT37, RT10, Operational Intelligence

## Retail Scanners



### XENON™ ULTRA

Building on barcode technology, Honeywell's Xenon Ultra offers improved scan performance and premium features to help retailers maintain productivity and focus on customer service. Available in corded and cordless options, the cordless model supports multiple power sources and contactless charging. Features like a green-dot aimer and a new scan platform ensure fast and accurate scanning.



**POWER UP WITH:**

CT70, CT37, RT10, Operational Intelligence



### VOYAGER™ XP

The Voyager™ Extreme Performance (XP) cordless scanner offers top-tier scanning for both traditional and digital barcodes, including damaged ones. Its superior durability and extended scan range make it ideal for robust workflows, allowing easy barcode reading without bending during checkout.



**POWER UP WITH:**

CT70, CT37, RT10, Operational Intelligence



# | INDUSTRIAL SCANNERS

## Presentation Scanner



### GENESIS XP

The Genesis XP features 20% faster scanning speed and a larger scanning area than previous products. Honeywell's field proven XP scanning technology handles poorly printed and damaged barcodes with ease. Impressive depth of field allows barcodes to be read even if placed right at the face of the scanner. Featuring a full 1 mega-pixel imager and fast processor, the Genesis XP reads barcodes fast and handles a high level of motion tolerance resulting in fewer repeat scans, keeping employees productive and ideal for checkout operations and products checks.



**POWER UP WITH:**

CT70, CT37, RT10, Operational Intelligence

## RFID Scanner



### IH40 RFID READER

The IH40 RFID reader, combined with RFID tagging, offers an easier solution to keep track of high moving inventory with less effort. Retailers can count inventory in the store and warehouse 25 times faster than with barcodes, often in a matter of a few hours, enabling more frequent inventory updates and closer management of inventory levels. Easy to use and ergonomically balanced, when paired with a Honeywell mobile computer, the IH40 offers fast, accurate UHF RFID inventory capture and convenient, integrated 1D/2D barcode capability.



**POWER UP WITH:**

CT70, CT37



# CONSISTENT SOLUTIONS FOR CONSISTENT WORKFLOWS

From desktop to industrial to mobile, Honeywell printers are the clear choice for a wide variety of labeling applications. The built-in “smarts” of our industrial printers mean greater efficiency and lower cost, with wired and wireless solutions for all high-demand printing needs. Our desktop printers are quiet, compact, intuitive and reliable— with a range of configurations designed to excel in your business environment. Our mobile printers are built to withstand punishing field conditions, enabling a full day of printing without recharging and maximizing printer uptime..

**FIXED PRINTERS ARE YOUR TRUSTED ALLIES.**



# | PRINTERS

## Mobile Printer



### RPf

The RPf Series is a rugged and reliable direct thermal portable label printer that offers easy integrated device management, a high level of security throughout the entire printer lifespan, and upgrades that allow your printers to be updated with enhanced features in direct store delivery, store picking, price checking, mobile POS and other appliances in retail storefloor.



**POWER UP WITH:**

Operational Intelligence, Support Services

## Industrial Printer



### PM65

The Honeywell PM65 industrial printer offers high-quality printing, advanced remote management, and real-time monitoring for increased efficiency and supply chain transparency. RFID enabled, Its rugged, easy-to-maintain design and versatile connectivity ensure reliable performance and adaptability for demanding environments.



**POWER UP WITH:**

Operational Intelligence, Support Services

## Desktop Printer



### PC41E-D / PC42E-D

Affordable, entry/mid-level desktop printers with reliable operation and high-quality output in warehouse and retail in-store environments. Built on the Printer Edge™ platform for seamless integration, high-performance printing, and reliable connectivity.

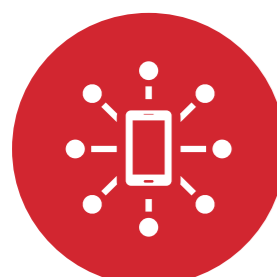


**POWER UP WITH:**

Operational Intelligence, Support Services



# OUR SIGNATURE PLATFORMS AND SOFTWARE FOR RETAIL

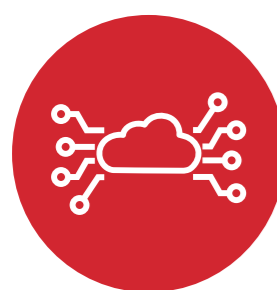


## MOBILITY EDGE™

Devices based on the Mobility Edge™ platform are intended for businesses that invest in powerful solutions to gain competitive advantage. The Mobility Edge™ platform is a durable, stable, secure foundation on which to build these solutions. The platform enables a longer productive life, superior security, optimized performance, and accelerated deployments.

Honeywell's Mobility Edge™ Platform represents the ultimate in collaborative, scalable mobile computing. By standardizing development across devices, businesses can:

- Enjoy long-term Android™ OS support with a committed upgrade schedule for each device.
- Easily scale solutions to growing operational demands.
- Reduce deployment and IT management costs through a hardware-software platform featuring the same SDKs, APIs, tools and software ecosystem across multiple Honeywell mobile form factors and over generations.



## OPERATIONAL INTELLIGENCE

Honeywell Operational Intelligence provides actionable insights into critical areas such as mobility devices, printer usage, and network connectivity. These insights can be turned into automated workflows that optimize in-store processes for greater productivity.



## HEM SERVICES

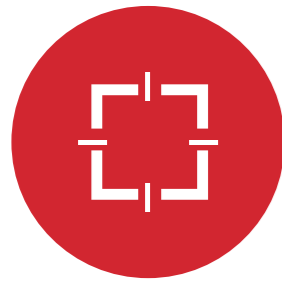
Honeywell Managed Services delivers end-to-end device lifecycle management, including configuration, testing, and deployment across global depots. Clients benefit from 24/7 multilingual help desk support, remote software management, proactive operational intelligence, and rapid device exchange to minimize downtime. The service covers both Honeywell and non-Honeywell devices, ensuring productivity and security throughout the device's life.



## PRINTER EDGE

At the heart of our offering is Honeywell Printer Edge™, a powerful all-in-one printing platform that simplifies printing with an intuitive interface and effortless setup, delivering consistent, high-quality output. Printer Edge™ is compatible with multiple non-native printing languages and offers tools for comprehensive control over print operations. Its user-friendly design enhances security and performance, while providing full visibility into your printer network.

Empower your business with Printer Edge™, where simplicity meets efficiency in print management.



**SWIFTDECODER**

SwiftDecoder streamlines retail operations by providing advanced data capture in an easy-to-integrate SDK or wedge. Supporting multiple scan modes and optical character recognition, it enhances tasks like price validation, in-store picking, and product information lookup. Its compatibility across various development environments and features like augmented reality overlays allow retailers to deliver efficient service and an improved user experience.



**HONEYWELL SMART PAY**

Smart Pay enables Honeywell mobile computers to become secure and contactless mobile points-of-sale, allowing customers to submit a payment anywhere and turning shoppers into buyers. Smart Pay is designed to integrate with the merchant's existing POS software and payment processing systems, preserving existing relationships with merchant banks and processor/acquirers and POS solution vendors. Smart Pay reduces TCO by eliminating the need for additional hardware to power your mPos device.



**PERFORMANCE +**

Performance+ for Guided Work transforms data from voice-guided workflows into actionable insights and advanced analytics. It enables managers to analyze time allocation, efficiency, and productivity, pinpoint training needs, and explore trends through intuitive dashboards and self-service reporting. With comprehensive metrics and customizable reports, Performance+ helps organizations optimize operations, reduce idle time, and improve workforce utilization.



**GUIDED WORK SOLUTIONS**

Honeywell Guided Work Solutions uses intuitive voice-guided systems and real-time data integration to streamline labour-intensive workflows. The platform supports hands- and eyes-free operation, reducing safety incidents and improving worker safety, while adaptive speech recognition enables fast onboarding and training. With support for multiple languages and integration with host systems, managers gain instant insights into workflow progress, enabling quicker, more informed decision-making.



**SMART TALK**

Smart Talk is Honeywell's unified communications platform for frontline workers, enabling instant voice, messaging, video, and file sharing on any mobile device. It streamlines team communications, reduces equipment costs, and boosts productivity by connecting employees quickly and securely



# THIS IS HOW YOU WIN WITH HONEYWELL

By leveraging Honeywell's dynamic retail technology across its business transformation, shopper experience, workforce operations, and cost optimization pillars, customers gain the agility and intelligence needed to excel. Honeywell empowers retailers to unify data, personalize experiences, support their workforce with AI-driven tools, and automate cost-saving decisions; creating seamless journeys, resilient operations, and sustainable growth. With Honeywell, businesses confidently respond to market shifts, exceed shopper expectations, optimize resources, and shape the future of commerce, unlocking lasting competitive advantage and customer loyalty.





**Contact your Connection Account Team for more information.**

Business Solutions	Enterprise Solutions	Public Sector Solutions
1.800.800.0014	1.800.369.1047	1.800.800.0019

[www.connection.com/Honeywell](http://www.connection.com/Honeywell)

