

Don't let power problems catch you off guard

Uncover risks with our free, virtual Power Infrastructure Assessment.

Is your UPS infrastructure secretly draining your budget?

Hidden power issues, wasted capacity, and security gaps often go unnoticed until they cause real damage. Schneider Electric's cloud-based EcoStruxure™ IT Expert monitors your distributed IT equipment in real-time to fix problems before they hurt your business.

A Power Infrastructure Assessment can help uncover:



Hidden power inefficiencies that are silently increasing your energy costs and carbon footprint.



Potential system vulnerabilities before they evolve into costly downtime events.



Underutilized capacity that could be optimized to extend equipment life and defer capital expenditures.



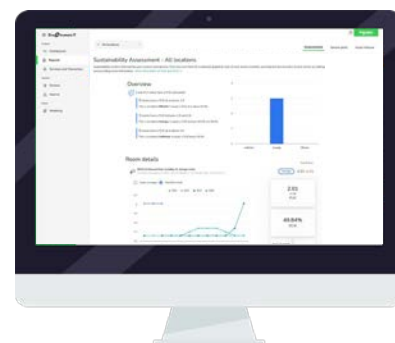
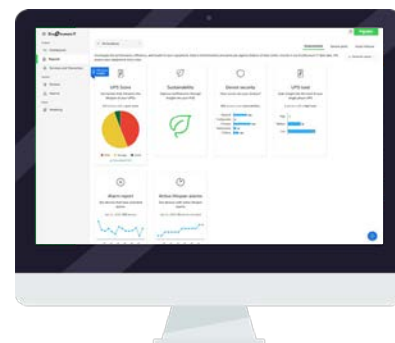
Security gaps in firmware and configurations that could expose your infrastructure to risk.



Sustainability opportunities to improve PUE metrics and align with corporate environmental goals.



EcoStruxure™
Innovation At Every Level

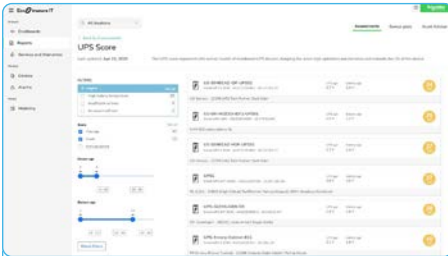


*To qualify for an assessment with this vendor-agnostic tool, UPS systems must be networked with IP addresses.

Life Is On

Schneider
Electric

Targeted tools for total visibility



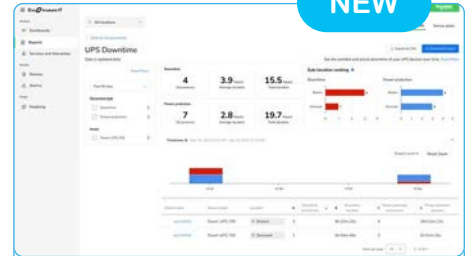
UPS Health Assessment

Receive a comprehensive health score with specific recommendations to optimize UPS performance and reliability.



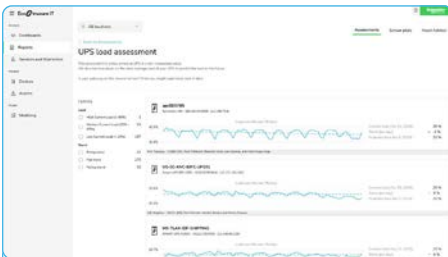
Security Vulnerability Assessment

Identify outdated firmware and vulnerable configurations to proactively strengthen your security posture.



UPS Downtime Assessment

Quantify avoided and actual downtime events to demonstrate the value of proper UPS management and maintenance.



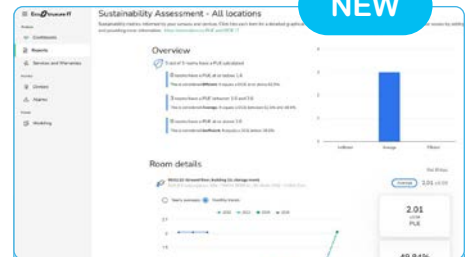
UPS Load Assessment

Assess UPS loads to find cost-saving opportunities by optimizing equipment placement and ensuring future IT load capacity.



Active Lifespan Alarms Assessment

Review critical active alarms to prioritize replacements and prevent potential failures.



Sustainability Assessment

Measure your PUE and power consumption to identify energy-saving opportunities that reduce costs and carbon footprint.

Uncover issues before they impact your business

Take advantage of a free Power Infrastructure Assessment to find your UPS vulnerabilities before they become major headaches.

Contact your dedicated sales representative to get started.

NetShelter Rack PDU Advanced Series

Voltage	Mounting U-space	Nominal voltage	Available in*	Input circuit	Nominal power	Input plug type**	Output receptacles†	Cord length	Model
Metered	Vertical, 0U	230	WW	32 A, 1ϕ	7.4 kW	IEC-309 32 A	(20) C13/15 (20) 4-in-1	3 m	APDU11150ME
	Vertical, 0U	400 – 415	WW	16 (IEC), 20 (UL) A, 3ϕ	11.0 (IEC), 11.5 (UL) kW	IEC-309 20 A 3P+N+PE	(21) C13/15 (21) 4-in-1	3 m	APDU11250ME
	Vertical, 0U	400 – 415	WW	32 (IEC), 30 (UL) A, 3ϕ	22.1 (IEC), 17.3 (UL) kW	IEC-309 30 A 3P+N+PE	(24) C13/15 (24) 4-in-1	3 m	APDU11350ME
	Vertical, 0U	400 – 415	WW	63 (IEC), 60 (UL) A, 3ϕ	43.5 (IEC), 34.6 (UL) kW	IEC-309 60 A 3P+N+PE	(21) C13/15 (21) 4-in-1	3 m	APDU11450ME
	Vertical, 0U	208	NAM	30 (UL) A, 1ϕ	5.0 (UL) kW	NEMA L6-30P	(20) C13/15 (20) 4-in-1	3 m	APDU11151ME
	Vertical, 0U	208	NAM	30 (UL) A, 3ϕ	8.6 (UL) kW	NEMA L21-30P	(21) C13/15 (21) 4-in-1	3 m	APDU11351ME
	Vertical, 0U	208	NAM	50 (UL) A, 3ϕ	14.4 (UL) kW	CS8365C	(21) C13/15 (21) 4-in-1	3 m	APDU11451ME
Metered-by-Outlet	Vertical, 0U	400 – 415	WW	32 (IEC), 30 (UL) A, 3ϕ	22.1 (IEC), 17.3 (UL) kW	IEC-309 32 A 3P+N+PE	(24) C13/15 (24) 4-in-1	3 m	APDU11350MO
	Vertical, 0U	208	NAM	60 (UL) A, 3ϕ	17.3 (UL) kW	IEC-309 60 A 3P+PE	(21) C13/15 (21) 4-in-1	3 m	APDU11452MO
Switched	Vertical, 0U	230	WW	32 A, 1ϕ	7.4 kW	IEC-309 32 A	(20) C13/15 (20) 4-in-1	3 m	APDU11150SW
	Vertical, 0U	400 – 415	WW	16 (IEC), 20 (UL) A, 3ϕ	11.0 (IEC), 11.5 (UL) kW	IEC-309 20 A 3P+N+PE	(21) C13/15 (21) 4-in-1	3 m	APDU11250SW
	Vertical, 0U	400 – 415	WW	32 (IEC), 30 (UL) A, 3ϕ	22.1 (IEC), 17.3 (UL) kW	IEC-309 30 A 3P+N+PE	(24) C13/15 (24) 4-in-1	3 m	APDU11350SW
	Vertical, 0U	400 – 415	WW	63 (IEC), 60 (UL) A, 3ϕ	43.5 (IEC), 34.6 (UL) kW	IEC-309 60 A 3P+N+PE	(21) C13/15 (21) 4-in-1	3 m	APDU11450SW
	Vertical, 0U	208	NAM	30 (UL) A, 1ϕ	5 (UL) kW	NEMA L6-30P	(20) C13/15 (20) 4-in-1	3 m	APDU11151SW
	Vertical, 0U	208	NAM	30 (UL) A, 3ϕ	8.6 (UL) kW	NEMA L21-30P	(24) C13/15 (24) 4-in-1	3 m	APDU11351SW
	Vertical, 0U	208	NAM	50 (UL) A, 3ϕ	14.4 (UL) kW	CS8365C	(21) C13/15 (21) 4-in-1	3 m	APDU11451SW
Metered-by-Outlet with Switching	Vertical, 0U	230	WW	32 A, 1ϕ	7.4 kW	IEC-309 32 A	(20) C13/15 (20) 4-in-1	3 m	APDU11150SM
	Vertical, 0U	400 – 415	WW	16 (IEC), 20 (UL) A, 3ϕ	11.0 (IEC), 11.5 (UL) kW	IEC-309 20 A 3P+N+PE	(24) C13/15 (24) 4-in-1	3 m	APDU11250SM
	Vertical, 0U	400 – 415	WW	32 (IEC), 30 (UL) A, 3ϕ	22.1 (IEC), 17.3 (UL) kW	IEC-309 30 A 3P+N+PE	(24) C13/15 (24) 4-in-1	3 m	APDU11350SM
	Vertical, 0U	400 – 415	WW	63 (IEC), 60 (UL) A, 3ϕ	43.5 (IEC), 34.6 (UL) kW	IEC-309 60 A 3P+N+PE	(21) C13/15 (21) 4-in-1	3 m	APDU11450SM
	Vertical, 0U	208	NAM	30 (UL) A, 1ϕ	5 (UL) kW	NEMA L6-30P	(20) C13/15 (20) 4-in-1	3 m	APDU11151SM
	Vertical, 0U	208	NAM	30 (UL) A, 3ϕ	8.6 (UL) kW	NEMA L21-30P	(24) C13/15 (24) 4-in-1	3 m	APDU11351SM
	Vertical, 0U	208	NAM	50 (UL) A, 3ϕ	14.4 (UL) kW	CS8365C	(21) C13/15 (21) 4-in-1	3 m	APDU11451SM
	Vertical, 0U	208	NAM	60 (UL) A, 3ϕ	17.3 (UL) kW	IEC-309 60 A 3P+PE	(21) C13/15 (21) 4-in-1	3 m	APDU11452SM

Regional availability key: **NAM** = North America; **WW** = Worldwide
*Commercial Reference (CR) availability is generalized and may not cover all countries. **Please check our website to confirm specific CR availability in your country.**
**IEC Input Plug options listed are IP44 plug types; †4-in-1 outlet acts as C13/C15/C19/C21 outlet.

Network Management Card 3 (for NetShelter Rack PDU Advanced)

Description	Available in	Model
APC NetShelter Rack PDU Advanced Display Module with Embedded NMC3	WW	APDU9640NMC3
APC NetShelter Rack PDU Advanced Display Module with Embedded NMC3 - Master Pack (QTY 50)	WW	APDU9640NMC3-MP50

Intelligent power management options

- **Metered:** Real-time remote monitoring of connected loads; user-defined alarms that warn of potential circuit overloads before critical IT failures occur
- **Switched:** Advanced load monitoring combined with remote on/off switching control of individual outlets for power cycling, delayed power sequencing, and outlet use management
- **Metered-by-outlet:** Real-time remote monitoring of each individual outlet
- **Metered-by-outlet with switching:** Real-time remote monitoring of each individual outlet combined with remote on/off outlet switching control



we solve IT®

Contact your Connection Account Team for more information.

Business Solutions
1.800.800.0014

Enterprise Solutions
1.800.369.1047

Public Sector Solutions
1.800.800.0019

www.connection.com/APC