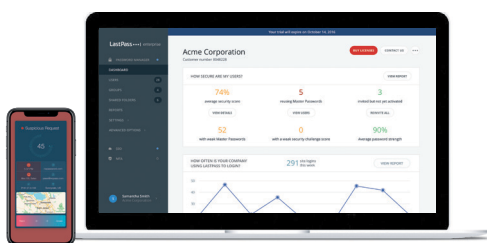


# LastPass Identity offers unified visibility and control over every access point

In an always-connected, hyper-mobile world, IT is challenged to keep the business secure. Even as cyberthreats rise, employees expect technology to be fast, convenient and easy to use. There are more devices, applications, networks and even users in your business ecosystem, inside and outside the office walls, which means managing and protecting user access is more complex than ever. Increased complexity in your business ecosystem means additional hurdles to securing access across the organization.

With so much in flux, IT can find themselves overwhelmed. How can you protect user access and authentication in an automated, secure and affordable way? Businesses need an all in one identity solution that is simple, integrated and seamless while increasing security.

LastPass Identity provides simple control and unified visibility across every entry point to your business, with an intuitive access and multifactor authentication experience that works on everything from cloud, mobile and legacy apps, VPN and workstation. From single sign-on and password management to biometric authentication, LastPass Identity gives superior control to IT and a passwordless experience for employees - even if they are offline.



## Unified admin control

Give IT a holistic view of end-user activity from a single, easy-to-use dashboard. Manage user onboarding and offboarding through your directory, deploy passwordless authentication methods, enable monitoring, see actionable security alerts and set security policies. LastPass Identity ensures IT can give the right access to the right people at the right time. Eliminate tedious, manual tasks and give IT visibility into access security across the business.

## Simple management for IT

It's never been easier to roll out identity and access management tools. Leverage existing user directories for easy onboarding and offboarding as well as group management. Little day-to-day management means more time for value-add IT projects.

## Custom, granular controls

Holistic security doesn't have to be complex. LastPass Identity offers 100+ policies that manage users at the app, individual, group or organizational level, so you can customize access and authentication requirements to the needs of your business. Ensure policies are consistent across single sign-on, password management and multifactor authentication.

## Universal access management

From cloud, mobile and legacy apps, VPN and workstation, LastPass Identity secures access to all the tools employees use. One portal unlocks employee access to everything for an easier, more secure workday.



**All-in-one access solution**



**1,200+ SSO app catalog**



**Universal password management**



**Ease of use for IT and employees**

### Passwordless access

Passwords are an unending source of frustration and risk. Using biometrics and adaptive authentication, LastPass Identity can eliminate passwords and streamline employee access to work applications to improve productivity and eliminate password related risk.

### Flexible multifactor authentication

LastPass Identity offers versatile authentication methods that adapt to specific user profiles, with customizable policies at the user and group level, so you can support every user in the organization without sacrificing security.

### Reduced access-related risks

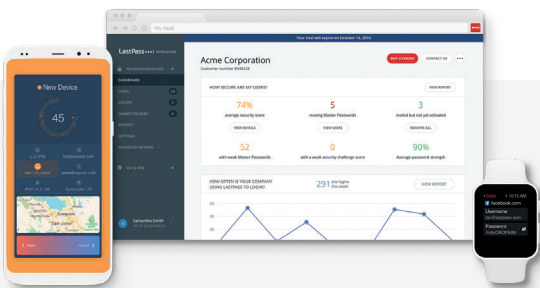
When the average employee shares six passwords with coworkers, quick and flexible credential sharing is a must. From IT to marketing, LastPass Identity makes it easy to maintain accountability and security while sharing access.

### Zero-knowledge security

Security and privacy are non-negotiable. LastPass is designed to keep sensitive data safe with a zero-knowledge approach. Biometric data and encryption keys never leave the user's device, so personal information remains secure and private.

## These features deliver the control IT needs and the convenience users expect:

<b>Central admin control</b>	The admin dashboard gives IT a unified view of access across the business and centralizes management of users, policies, reporting and more.
<b>Biometric multifactor authentication</b>	Eliminate passwords while increasing security by combining biometrics and contextual factors to adapt authentication requirements to different situations.
<b>Single sign-on</b>	With a catalog of 1200+ pre-integrated apps, it's simple for IT to make critical business tools accessible to employees in one convenient portal.
<b>Enterprise password management</b>	For the apps IT doesn't know about, LastPass Identity offers password management features that capture, store and fill credentials for any web-based login.
<b>User directory integrations</b>	Automate onboarding and offboarding, group management and more with AD, Azure AD, Okta, OneLogin or a custom API.
<b>100+ security policies</b>	Enforce best practices and control password behavior across the business.
<b>Detailed security reports</b>	Tie actions to individuals with automated, detailed reporting that helps your business maintain compliance.
<b>Secure password sharing</b>	Give teams a flexible, safe way to share access to apps without sacrificing accountability or security.



**Connection**  
we solve IT®

1.800.800.0014  
[www.connection.com/LogMeIn](http://www.connection.com/LogMeIn)