

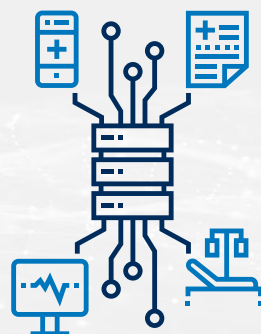


MODERN INFRASTRUCTURE AND MULTICLOUD

Smarter Infrastructure for Healthcare AI

What Is Edge Management in Healthcare?

Edge management refers to real-time, local data processing at the point of care—smart beds, monitors, mobile workstations, and autonomous robots. It represents a shift from centralized computing to decentralized models that bring compute power closer to where data is generated.



The Data Overload

Healthcare organizations face a mountain of unstructured data scattered across devices running on proprietary or disconnected systems.

Without clear policies for retention, backup, or recovery, visibility into critical information is lost.



54% of known edge vulnerabilities were fully remediated



Median patch time:
32 days



22% of breaches stemmed from edge device vulnerabilities

Security Snapshot

Security remains a top concern in edge environments.

60% of breaches involve human error



Ransomware appeared in 44% of breaches, up from 32%

Phishing remains the dominant social engineering technique



How Edge Management Supports Healthcare IT

Healthcare IT teams face a range of challenges when managing edge environments. These include fragmented data systems, security vulnerabilities, and limited resources.

Common Challenges

Fragmented data across disconnected devices



Security vulnerabilities due to delayed patching



Limited visibility into device performance and logs



Resource constraints and staff shortages



Practical Solutions

Centralized policy control for consistent device management

Automated patching and vulnerability remediation

AI-driven monitoring for real-time threat detection

Unified dashboards for visibility across edge devices

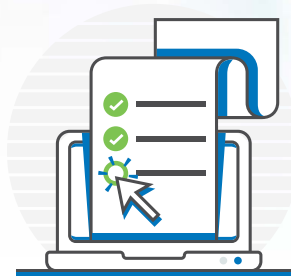
AI as a Forcing Function

AI initiatives can serve as a catalyst to audit edge readiness. IT leaders should evaluate a few key areas to support clinical goals, while ensuring robust security and operational efficiency.

Are smart devices patched?

Are logs monitored?

Is data captured for clinical goals?



Why Connection?

30+ years of healthcare IT experience.

Proven success deploying intelligent infrastructure.

Partnership with leading health systems nationwide.

Explore our Solutions and Services

[Healthcare](#)
[Cybersecurity](#)
[Modern Infrastructure](#)

Contact an Expert
1.800.998.0067