

Intel® Ethernet Converged Network and Server Adapters

Connectivity you can count on

Reliable Performance

- Broad OS support
- Optimized for Intel® Architecture
- Low latency Ethernet

Best Choice for Virtualization

- Outstanding virtualization performance with Intel® Virtualization Technology for Connectivity
- Leadership in virtual system scalability with Flexible Port Partitioning (FPP) and intelligent offload
- Broad Hypervisor support (VMware ESXi*, Microsoft Hyper-V*, KVM* and Xen*)

Unified Networking

- Full line of 10GbE Converged Network Adapters (CNA)
- Fibre Channel over Ethernet
- iSCSI with trusted, native OS support
- Support for Data Center Bridging with lossless Ethernet

Platform Optimization

- Integrated PCI Express*
- Intel® Direct Data I/O Technology

Compatibility tested for trouble-free interoperability with network infrastructure elements.

Broad selection from 10/100 Mbps to 10 Gbps, for copper or fiber, from PCI to PCI Express*, BASE-T to SFP+, with network reach from 1 meter to 10 kilometers and in single- to quad-port configurations. Other form factors including custom mezzanine cards and express modules are available upon request.

Performance and reliability backed by more than 30 years of network connectivity experience and Intel worldwide customer support.

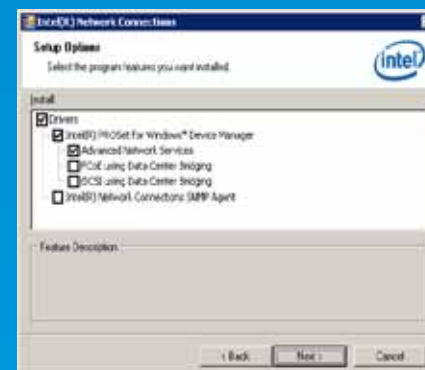
Easy installation and management with Intel® Advanced Network Services (Intel® ANS) and Intel® PROSet for Windows Device Manager* and other tools.

Worldwide availability and environmentally friendly for compliance with global market requirements.

Quick and Easy Converged Network and Server Adapter Management

Powerful point-and-click configuration tool for advanced adapter features, connection teaming, DCB, VLANs, with Intel® PROSet for Windows Device Manager*.

- **Convenient access** to Intel® PROSet Utility, now integrated in Windows Device Manager.
- **Simple, integrated tools** make it easy to manage and troubleshoot Ethernet connections in both servers and client computers.
- **Supports multi-vendor teaming** for adapter compatibility with most on-board connections.



Ethernet Everywhere. It Just Works.

www.intel.com/go/ethernet



©2013 Intel Corporation. All rights reserved. Intel, the Intel logo, and Intel SingleDriver are trademarks or registered trademarks of Intel Corporation or its subsidiaries in the United States and other countries.

*Other names and brands may be claimed as the property of others.

0413/TR/MESH/ALM/1K

252454-024US

Intel® Ethernet Converged Network and Server Adapters

Product Selection Guide

UPDATED MARCH 2013



Reliable Performance ▪ Best Choice for Virtualization ▪ Unified Networking



Ethernet Everywhere. It Just Works.

For additional product information, please visit intel.com/go/ethernet

INTEL® ETHERNET 10GbE ACCESSORIES

^aIntel® Ethernet SFP+ Twin axial Cables
XDACBL1M = 1 Meter
XDACBL3M = 3 Meter
XDACBL5M = 5 Meter

^bIntel® Ethernet SFP+ Optics
E10GSFSPR = SFP+ SR Optic
E10GSFPLR = SFP+ LR Optic

¹Ships with Qty 1 E10GSFSPR*

²Ships with Qty 2 E10GSFSPR*

³Ships with Qty 1 E10GSFPLR*

*Customer may remove optics as needed

Speed	10 GIGABIT FOR SERVERS AND WORKSTATIONS										
Brand Name	Intel® Ethernet Converged Network Adapter X540-T2	Intel® Ethernet Converged Network Adapter X540-T1	Intel® Ethernet Converged Network Adapter X520-DA4 ^{a,b}	Intel® Ethernet Converged Network Adapter X520-DA2 ^{a,b}	Intel® Ethernet Server Adapter 10 Gigabit AT2	NetEffect™ Ethernet Server Cluster Adapter CX4	NetEffect™ Ethernet Server Cluster Adapter SFP+ SR	Intel® Ethernet Converged Network Adapter X520-SR1 ^{a,b,1}	Intel® Ethernet Converged Network Adapter X520-SR2 ^{a,b,2}	Intel® Ethernet Converged Network Adapter X520-LR1 ^{a,b,3}	NetEffect™ Ethernet Server Cluster Adapter SFP+ SR ^{a,b}
Product Code	X540T2 X540T2BLK	X540T1 X540T1BLK	X520DA4F	E10G42BTDA E10G42BTDA BLK	E10G41AT2	E10G81GT2CX4	E10G81G2P	E10G41BF5R E10G41BF5RBLK	E10G42BF5R E10G42BF5RBLK	E10G41BF1R E10G41BF1RBLK	E10G81GF2SR
Intel® Ethernet Controller	Intel® X540	Intel® X540	Two Intel® 82599ES0	Intel® 82599ES	Intel® 82598EB	NetEffect™ NE020	NetEffect™ NE020	Intel® 82599ES	Intel® 82599ES	Intel® 82599ES	NetEffect™ NE020
Connector & Cable Medium	RJ-45 Copper Twisted Pair	RJ-45 Copper Twisted Pair	SFP+ Direct Attach Copper	SFP+ Direct Attach Copper	RJ-45 Copper Twisted Pair	CX4 Copper Twisted Pair	SFP+ Direct Attach Copper	LC Fiber Optic	LC Fiber Optic	LC Fiber Optic	LC Fiber Optic
Cabling Type	Category-6 up to 55 m Category-6A up to 100 m	Category-6 up to 55 m Category-6A up to 100 m	SFP+ Direct Attached Twin Axial Cabling up to 10 m	SFP+ Direct Attached Twin Axial Cabling up to 10 m	Category-6 up to 55 m Category-6A up to 100 m	8 pair, 100 ohm Twin Axial Cabling up to 15 m	SFP+ Direct Attached Twin Axial Cabling up to 10 m	MMF 62.5/50 µm up to 300 m	MMF 62.5/50 µm up to 300 m	SMF up to 10 km	MMF 62.5/50 µm up to 300 m
Slot Type, Maximum Bus Speed & Slot Width	PCI Express* 2.1 5.0 GT/s, x8 Lane	PCI Express* 2.1 5.0 GT/s, x8 Lane	PCI Express* 3.0 8.0 GT/s, x8 Lane	PCI Express* 2.0 5.0 GT/s, x8 Lane	PCI Express* 2.0 2.5 GT/s, x8 Lane	PCI Express* 1.1 2.5 GT/s, x8 Lane	PCI Express* 1.1 2.5 GT/s, x8 Lane	PCI Express* 2.0 5.0 GT/s, x8 Lane	PCI Express* 2.0 5.0 GT/s, x8 Lane	PCI Express* 2.0 5.0 GT/s, x8 Lane	PCI Express* 1.1 2.5 GT/s, x8 Lane
Ports	Dual Port	Single Port	Quad Port	Dual Port	Single Port	Single Port	Single Port	Single Port	Dual Port	Single Port	Single Port
Supported Slot Height(s)	Low Profile and Full Height	Low Profile and Full Height	Full Height	Low Profile and Full Height	Low Profile and Full Height	Low Profile and Full Height	Low Profile and Full Height	Low Profile and Full Height	Low Profile and Full Height	Low Profile and Full Height	Low Profile and Full Height
Intelligent Offloads	Yes	Yes	Yes	Yes	Yes	Yes	Yes	Yes	Yes	Yes	Yes
Intel® Virtualization Technology for Connectivity	On-chip QoS and Traffic Management, Flexible Port Partitioning, Virtual Machine Device Queues (VMDq), PCI-SIG* SR-IOV capable	On-chip QoS and Traffic Management, Flexible Port Partitioning, Virtual Machine Device Queues (VMDq), PCI-SIG* SR-IOV capable	On-chip QoS and Traffic Management, Flexible Port Partitioning, Virtual Machine Device Queues (VMDq), PCI-SIG* SR-IOV capable	On-chip QoS and Traffic Management, Flexible Port Partitioning, Virtual Machine Device Queues (VMDq), PCI-SIG* SR-IOV capable	On-chip QoS and Traffic Management, Virtual Machine Device Queues (VMDq), Hypervisor-based Port Partitioning	NA	NA	On-chip QoS and Traffic Management, Flexible Port Partitioning, Virtual Machine Device Queues (VMDq), PCI-SIG* SR-IOV capable	On-chip QoS and Traffic Management, Flexible Port Partitioning, Virtual Machine Device Queues (VMDq), PCI-SIG* SR-IOV capable	On-chip QoS and Traffic Management, Flexible Port Partitioning, Virtual Machine Device Queues (VMDq), PCI-SIG* SR-IOV capable	NA
Storage over Ethernet	iSCSI, FCoE, NFS	iSCSI, FCoE, NFS	iSCSI, FCoE, NFS	iSCSI, FCoE, NFS	iSCSI, FCoE, NFS	iSCSI, NFS	iSCSI, NFS	iSCSI, FCoE, NFS	iSCSI, FCoE, NFS	iSCSI, FCoE, NFS	iSCSI, NFS
iWARP/RDMA	NA	NA	NA	NA	NA	Yes	Yes	NA	NA	NA	Yes

Speed	GIGABIT FOR SERVERS AND WORKSTATIONS												GIGABIT FOR DESKTOPS
	Copper												Copper
Brand Name	Intel® Ethernet Server Adapter I210-T1	Intel® Ethernet Server Adapter I350-T4	Intel® Ethernet Server Adapter I350-T2	Intel® Ethernet Server Adapter I340-T4	Intel® Ethernet Server Adapter Gigabit ET Dual Port	Intel® Ethernet Server Adapter Gigabit ET2 Quad Port	Intel® Ethernet Server Adapter PRO/1000 PT	Intel® Ethernet Server Adapter I350-F2	Intel® Ethernet Server Adapter I350-F4	Intel® Ethernet Server Adapter I340-F4	Intel® Ethernet Server Adapter Gigabit EF Dual Port	Intel® Ethernet Server Adapter PRO/1000 PF	Intel® Ethernet Desktop Adapter Gigabit CT
Product Code	I210T1 I210T1BLK	I350T4 I350T4BLK	I350T2 I350T2BLK	E1G44HT E1G44HTBLK	E1G42ET E1G42ETBLK	E1G44ET2 E1G44ET2BLK	EXPI9400PT EXPI9400PTBLK	I350F2 I350F2BLK	I350F4 I350F4BLK	E1G44HF E1G44HFBLK	E1G42EF E1G42EFBLK	EXPI9400PF EXPI9400PFBLK	EXPI9301CT EXPI9301CTBLK
Intel® Ethernet Controller	Intel® I210	Intel® I350	Intel® I350	Intel® 82580	Intel® 82576	Intel® 82576	Two Intel® 82572	Intel® I350	Intel® I350	Intel® 82580	Intel® 82576	Intel® 82572	Intel® 82574
Connector & Cable Medium	RJ-45 Copper Twisted Pair	RJ-45 Copper Twisted Pair	RJ-45 Copper Twisted Pair	RJ-45 Copper Twisted Pair	RJ-45 Copper Twisted Pair	RJ-45 Copper Twisted Pair	RJ-45 Copper Twisted Pair	LC Fiber Optic	LC Fiber Optic	LC Fiber Optic	LC Fiber Optic	LC Fiber Optic	RJ-45 Copper Twisted Pair
Cabling Type	Category-5 up to 100 m	Category-5e up to 100 m	Category-5e up to 100 m	Category-5e up to 100 m	Category-5e up to 100 m	Category-5e up to 100 m	Category-5e up to 100 m	MMF 62.5 µm up to 275 m MMF 50 µm up to 550 m	MMF 62.5 µm up to 275 m MMF 50 µm up to 550 m	MMF 62.5 µm up to 275 m MMF 50 µm up to 550 m	MMF 62.5 µm up to 275 m MMF 50 µm up to 550 m	MMF 62.5/50 µm up to 275 m	Cat 5e up to 100 m
Slot Type, Maximum Bus Speed & Slot Width	PCI Express* 2.1 2.5 GT/s, x1 Lane	PCI Express* 2.1 5 GT/s, x4 Lane	PCI Express* 2.1 5 GT/s, x4 Lane	PCI Express* 2.0 5 GT/s, x4 Lane	PCI Express* 2.0 2.5 GT/s, x4 Lane	PCI Express* 2.0 2.5 GT/s, x4 Lane	PCI Express* 2.0 2.5 GT/s, x1 Lane	PCI Express* 2.1 5 GT/s, x4 Lane	PCI Express* 2.1 5 GT/s, x4 Lane	PCI Express* 2.0 5 GT/s, x4 Lane	PCI Express* 2.0 2.5 GT/s, x4 Lane	PCI Express* 2.0 2.5 GT/s, x4 Lane	PCI Express* 2.0 2.5 GT/s, x1 Lane
Ports	Single Port	Quad Port	Dual Port	Quad Port	Dual Port	Quad Port	Single Port	Dual Port	Quad Port	Quad Port	Dual Port	Single Port	Single Port
Supported Slot Height(s)	Low Profile and Full Height	Low Profile and Full Height	Low Profile and Full Height	Low Profile and Full Height	Low Profile and Full Height	Low Profile and Full Height	Low Profile and Full Height	Low Profile and Full Height	Full Height	Full Height	Low Profile and Full Height	Low Profile and Full Height	Low Profile and Full Height
Halogen Free	Yes	Yes	Yes	Yes	NA	NA	NA	NA	NA	NA	NA	NA	NA
Intelligent Offloads	Yes	Yes	Yes	Yes	Yes	Yes	Yes	Yes	Yes	Yes	Yes	Yes	NA
Intel® Virtualization Technology for Connectivity	Includes Audio-Video Bridging (AVB) Support (802.1Qav)	On-chip QoS and Traffic Management, Flexible Port Partitioning, Virtual Machine Device Queues (VMDq), PCI-SIG* SR-IOV capable	On-chip QoS and Traffic Management, Flexible Port Partitioning, Virtual Machine Device Queues (VMDq), PCI-SIG* SR-IOV capable	On-chip QoS and Traffic Management, Virtual Machine Device Queues (VMDq)	On-chip QoS and Traffic Management, Flexible Port Partitioning, Virtual Machine Device Queues (VMDq), PCI-SIG* SR-IOV capable	On-chip QoS and Traffic Management, Flexible Port Partitioning, Virtual Machine Device Queues (VMDq), PCI-SIG* SR-IOV capable	NA	On-chip QoS and Traffic Management, Flexible Port Partitioning, Virtual Machine Device Queues (VMDq), PCI-SIG* SR-IOV capable	On-chip QoS and Traffic Management, Flexible Port Partitioning, Virtual Machine Device Queues (VMDq), PCI-SIG* SR-IOV capable	On-chip QoS and Traffic Management, Flexible Port Partitioning, Virtual Machine Device Queues (VMDq)	On-chip QoS and Traffic Management, Flexible Port Partitioning, Virtual Machine Device Queues (VMDq), PCI-SIG* SR-IOV capable	NA	NA
Storage over Ethernet	iSCSI, NFS	iSCSI, NFS	iSCSI, NFS	iSCSI, NFS	iSCSI, NFS	iSCSI, NFS	iSCSI, NFS	iSCSI, NFS	iSCSI, NFS	iSCSI, NFS	iSCSI, NFS	iSCSI, NFS	iSCSI, NFS
Intel® Ethernet Power Management ¹	Yes	Yes	Yes	NA	NA	NA	NA	Yes	Yes	NA	NA	NA	NA

Intel® Ethernet Power Management includes Energy Efficient Ethernet (EEE) and DMA Coalescing.